

**SECTION 1**

---

**Spelling**

**TASK 1**

There is one incorrectly spelt word in each line in the passage below. Draw a circle around the incorrectly spelt word. Write the correct spelling of the word in the box provided for each line.

The hikers embarked on an expedition along the

1.

Northern Range. They preferred the challenge of the

2.

difficult climb because of the astonishing scenery. The

3.

guide was experienced and acquainted with the route.

4.

Along the way he identified poisonous plants and others

5.

that were edible. The hikers were truly fascinated.

6.

**(12 marks)**



## Punctuation and Capitalization

### TASK 2

There is one punctuation or capitalization error in each line in the passage below. Insert the missing punctuation mark or capital letter in its correct place, in each line.

“Crab ” the driver yelled suddenly. He pointed

7.

to the blue eight-legged creature as it scurried

8.

along the busy roadside The car came to an abrupt

9.

stop. Sarah leaned forward excitedly, “ driver can

10.

you catch that huge crab for me? The driver

11.

cringed at the thought of the creatures large claws.

12.

(6 marks)



## Grammar

### TASK 3

There is one grammar error in each line in the passage below. Draw a circle around the error and write the correct form of the word in the box provided.

The population of sea turtles have plunged towards

13.

extinction. Predators feed on the turtles' eggs and its

14.

hatchlings. Humans, however, might be their worse

15.

enemies. Turtles become trap in fishing nets

16.

and safety devices can be used to prevent this. Hotel

17.

owners which use artificial lights, also add to the problem.

18.

(12 marks)



## Comprehension

TASK 4 –  
Non-Fiction

Read the passage, *The Impact of Social Media on Our Lives*, and answer questions 19 to 28.

## The Impact of Social Media on Our Lives

416  
5 A decade ago, it was very difficult to connect with people, even with the power of the internet. Social media sites such as Facebook, Instagram and YouTube are making it much easier for people to reconnect, even after decades of being apart. These sites allow people to share information instantly and to meet new people who have similar interests and thoughts. When used appropriately, social media can add value to our lives.

10 Social media sites are useful for marketing opportunities as well. Over the past few years, users have seen an increase in the amount of advertising on these sites. This allows for a much closer connection between customers and companies, which may lead to improved service and better quality products.

Social media sites are a good source of entertainment for young people. They can watch videos that people post to their timelines, view pictures, read stories and even play games. Whether using a smartphone, tablet or computer, more and more young people are utilizing social media in their daily lives.

15  
20 A013 Young people are often more ready to adapt to using technologies and they are at the forefront in the use of social media of all types. They also have more technological knowledge than many of the older generations. Social media, therefore, is having a great impact on their daily lives, whether positively or negatively. Those who spend too much time on social media sites may neglect important activities such as homework or chores. Others, who take the abuse of online bullies seriously, could suffer from stress, loss of appetite or experience sleeplessness. Some who are overly trusting can be easily misled by fake news. Therefore, it is important for parents to supervise their children's time on these sites.

*Adapted from: <https://linguagreca.co/blog/2013/05/impact-of-social-media-in-our-lives/>.*



**Questions: The Impact of Social Media on Our Lives**

19. List **two** ways people can reconnect online, as stated in the passage.

(i) \_\_\_\_\_

(ii) \_\_\_\_\_  
(2 marks)

20. Give **one** advantage of being able to share information instantly.

\_\_\_\_\_  
(1 mark)

21. Do you agree with the author's statement, "...social media can add value to our lives" (lines 5–6)? Give a reason for your answer.

\_\_\_\_\_  
\_\_\_\_\_  
(2 marks)

22. Give the meaning of each of the following words as used in the passage.

(i) appropriately (line 5)

\_\_\_\_\_  
(1 mark)

(ii) impact (line 18)

\_\_\_\_\_  
(1 mark)



23. Give **two** ways in which social media sites can benefit a business.

---

---

---

(2 marks)

24. "Young people are often more ready to adapt to using technologies" (line 15). Why is the author's use of the word "adapt" suitable?

---

---

(2 marks)

25. Give **two** pieces of evidence which support the view that young people have more technological knowledge than older people.

(i) \_\_\_\_\_

(ii) \_\_\_\_\_

(2 marks)

26. State **two** ways in which the information in paragraph 2 is different from that in paragraph 3.

(i) \_\_\_\_\_

(ii) \_\_\_\_\_

(2 marks)

27. Give **two** reasons why parents should supervise their children's use of social media sites, as stated in the passage.

(i) \_\_\_\_\_

(ii) \_\_\_\_\_

(2 marks)



28. What do you think is the purpose of the passage? Use **two** details from the passage to support your answer.

---

---

---

**(3 marks)**

416

A013



**When a Giant Has a Haircut**

When a giant has a haircut  
it's a massive enterprise  
due completely to the giant's  
quite considerable size.

- 5 To begin an undertaking  
of such monumental scope  
first the barber needs a scaffold  
and a thousand yards of rope.

- 10 He'll ascend by helicopter  
to the giant's lofty dome,  
with a pair of swords for scissors  
and a pitchfork for a comb.

- 15 Then for weeks and weeks he'll labour;  
he will cleave and slice and hack.  
He will chop and saw and sever  
like a raving lumberjack.

- 20 Turning forests into wastelands  
slashing tangles everywhere,  
you may hear him yelling, "TIMBER!"  
as he's felling strands of hair.

When at last the barber's finished  
then it fills his heart with sorrow  
when the giant says, "My hair grows fast;  
I'll come again tomorrow."

*Kenn Nesbitt*

\*Lumberjack – A person whose job it is to cut down trees.





**Questions: When a Giant Has a Haircut**

29. Give the meaning of each of the following words as used in the poem.

undertaking (line 5)

\_\_\_\_\_

momental (line 6)

\_\_\_\_\_

(2 marks)

30. From the poem, list **two** tools which the barber requires to cut the giant's hair.

(i) \_\_\_\_\_

(ii) \_\_\_\_\_

(2 marks)

31. Identify **one** example of each of the following figures of speech in the poem.

(i) Simile \_\_\_\_\_

(ii) Metaphor \_\_\_\_\_

(2 marks)

32. What sense does the poet mainly appeal to in stanza 4? Write a line to support your answer.

\_\_\_\_\_

\_\_\_\_\_

\_\_\_\_\_

(2 marks)



33. "Turning forests into wastelands" (line 17).  
Why is this an appropriate description of the giant's haircut?

---

---

---

(2 marks)

34. Between the giant and the barber, who is more courageous? Give a reason for your answer using details from the poem.

---

---

---

(2 marks)

35. How is the mood in stanza 5 different from that in stanza 6?

---

---

(2 marks)

36. State **one** quality of the barber and support your answer with evidence from the poem.

Quality: \_\_\_\_\_

Evidence: \_\_\_\_\_

---

(2 marks)



37. Explain why the barber's heart fills with "sorrow" in the last stanza.

---

---

(2 marks)

38. If you were the giant, would you want this barber to cut your hair? Give one reason for your answer.

---

---

---

(2 marks)

416

A013

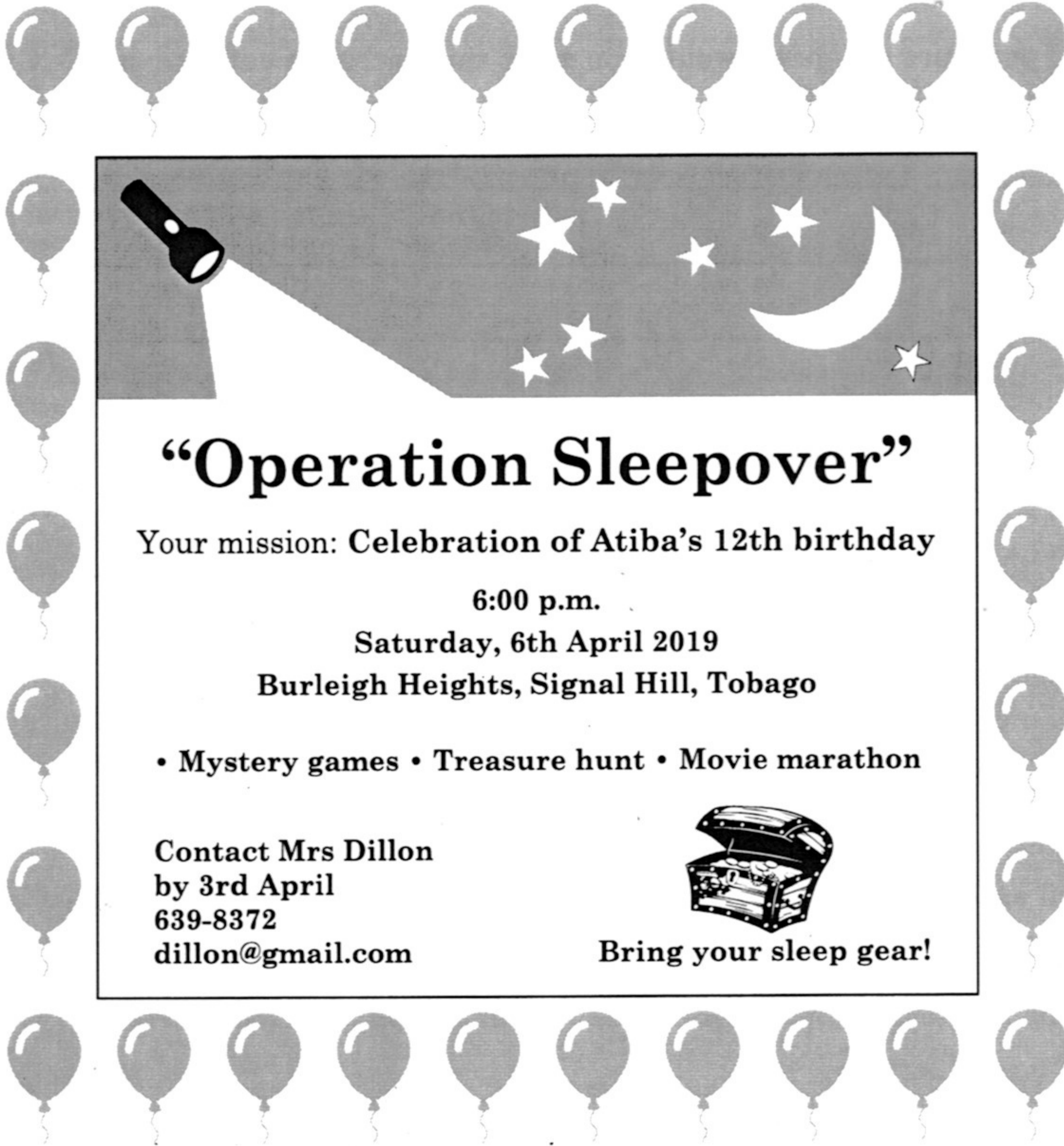


**TASK 6 – Graphic**

Read the invitation on this page and answer questions 39 to 43.

416

A013



# “Operation Sleepover”

Your mission: Celebration of Atiba’s 12th birthday

6:00 p.m.

Saturday, 6th April 2019

Burleigh Heights, Signal Hill, Tobago

- Mystery games • Treasure hunt • Movie marathon

Contact Mrs Dillon  
by 3rd April  
639-8372  
dillon@gmail.com



Bring your sleep gear!



**Questions: Operation Sleepover**

39. Using details from the invitation, fill in the following information.

What is "Operation Sleepover"? \_\_\_\_\_

Where will it be held? \_\_\_\_\_

**(2 marks)**

40. Identify **two** activities that will appeal to the children.

(i) \_\_\_\_\_

(ii) \_\_\_\_\_

**(2 marks)**

41. If you were creating this invitation, would you include the image of the flashlight?  
Give a reason for your answer.

\_\_\_\_\_

\_\_\_\_\_

**(2 marks)**

42. Give the meaning of each of the following words, as used on the invitation.

(i) Mission  
\_\_\_\_\_

**(1 mark)**

(ii) Movie marathon  
\_\_\_\_\_

**(1 mark)**



43. State **two** reasons why a child might receive this invitation.

(i) \_\_\_\_\_

(ii) \_\_\_\_\_

**(2 marks)**

416

A013

**END OF TEST**

**IF YOU FINISH BEFORE TIME IS CALLED,  
YOU MAY CHECK YOUR WORK BEFORE HANDING IN YOUR PAPER.**

*The Council has made every effort to trace copyright holders. However, if any have been inadvertently overlooked, or any material has been incorrectly acknowledged, CXC will be pleased to correct this at the earliest opportunity.*

